



The Commonwealth

WOMEN'S
ENTREPRENEURSHIP
ACCELERATOR

Confidential

Announcing the global partnership



Powered by





CWE Accelerator project team

Arif Zaman - Executive Director, CBWN

Freda Miriklis - Chairperson, CBWN

Bishakha Mukherjee - Vice Chair, Executive Committee of the Commonwealth Association, Advisor to CBWN

Nadia Munawar Siddiqui - Advisor to CBWN

Elaine Gold - Cofounder and Acting Managing Director, GEN UK

Marc Ortman - Cofounder and Chair, GEN UK

Tim Hart - Executive Director, Oxentia Foundation Ltd

Leticia Cabral – General Manager Spain and Global BD, Oxentia Ltd



Commonwealth Heads Of Government Meeting 2018



'We encourage Commonwealth and partner organisations to work towards an increase in the number and enhancement of the success rate of women-owned businesses, break down gender barriers in all sectors, and increase opportunities for women to trade internationally.'

CHOGM Communiqué, London 20 April 2018



54 COUNTRIES | 50 SPEAKERS | 20 TALKS | 12 SESSIONS | 2 DAYS | 1 SPACE | 19-20 MAY 2021



The Commonwealth Women's Entrepreneurship Summit - May 2021

We want to unlock and unleash the potential of a million women of the Commonwealth to participate in and shape the emerging tech economy, attract investment, achieve gender equality, leverage their talents and create jobs. The catalyst to enabling women to progress from aspiration to enterprise is an Accelerator. We call it the CWE Accelerator.

CBWN and GEN UK, 2021



Policy Brief on Incubators and Accelerators that Support Inclusive Entrepreneurship



THE IMPACT OF BUSINESS ACCELERATORS AND INCUBATORS IN THE UK

Jonathan Bone, Juanita Gonzalez-Uribe, Christopher Haley and Henry Lahr

BEIS Research Paper Number 2019/009



WOMEN'S
ENTREPRENEURSHIP
ACCELERATOR

The Public Policy Perspective

'there is likely untapped potential for business incubators and accelerators to be used more widely for social inclusion purposes'

OECD Policy Brief on Incubators and Accelerators that Support Inclusive Entrepreneurship, 2019

Accelerator participation is positively associated with startup survival, employee growth, and funds raised, and have positive spill-over effects on the wider business ecosystem.

Public funders [should] invest in pilot programmes and further research to understand good practice, displacement effects and the longevity of impact incubators and accelerators have.'

UK Department for Business, Energy & Industrial Strategy, The impact of business accelerators and incubators in the UK, 2019



The Commonwealth

WOMEN'S
ENTREPRENEURSHIP
ACCELERATOR

Global Stakeholder Alignment

UN Generation Equality Forum, Paris, 30 June - 02 July 2021

GENERATION
EQUALITY
FORUM

PARIS 2021



PROGRAMME

30 JUNE - 2 JULY 2021

By 2026

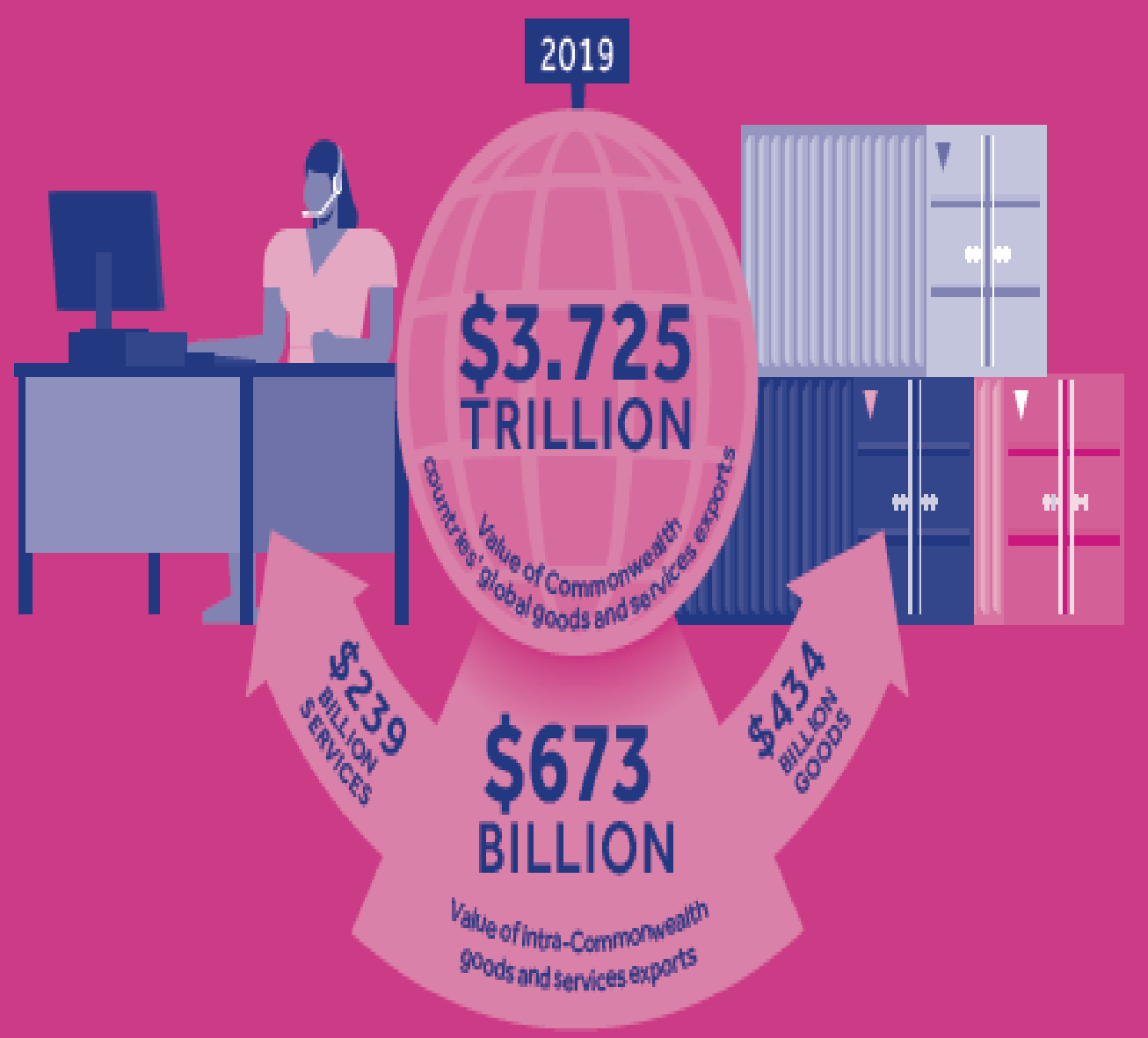
- Achieve gender equality in six key areas including tech and innovation
- Increase feminist technology and innovation investments by 50%
- Double proportion of women working in technology

Delivery plan

- Multi-stakeholder Action Coalitions established
- 1,000 commitment-makers confirmed including GSMA, Unilever, P&G, Mastercard, PayPal, CDC, Government of Bangladesh, African Development Bank
- Action Coalition on Technology and Innovation for Gender Equality includes the Government of Rwanda, ITU, Global Fund for Women, Rockefeller Foundation, Koc, Microsoft, Salesforce

Intra-Commonwealth trade has been affected significantly by COVID-19 but is expected to rebound and surpass US\$700 billion by 2022.

The Commonwealth Opportunity



- Diverse group of countries, sectors, and cultures
- 2.4 billion population with 60% under the age of 30 and 44% of the world's poorest women
- Trade advantage: up to 20% more trade, at a 21% lower cost, on average
- Network connections with Commonwealth's Trade Connectivity Agenda, SheTrades Commonwealth and the Blue Charter.
- Unique connections with private sector, young entrepreneurs, universities, professional organisations, women parliamentarians and mayors and flagship leadership programmes (such as Chevening) within the Commonwealth

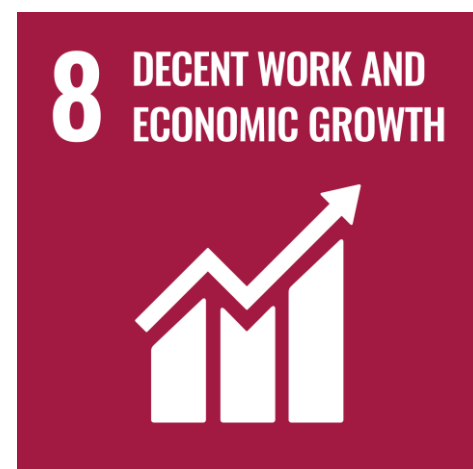


Impacting and Accelerating the SDGs

In addition to significant, sustained economic growth, the CWE Accelerator is designed to impact these SDGs:

- Gender Equality
- Partnerships
- Reduced Inequalities
- Quality Education
- Decent Work and Economic Growth

The report of the UN Secretary General to the UN General Assembly on “Our Common Agenda” in September 2021 looks ahead to the next 25 years. Among its 12 key proposals designed to accelerate the achievement of the SDGs is to 'place women and girls at the centre' by 'facilitating women's economic inclusion... and support for women entrepreneurs.'





Current Landscape of Female Entrepreneurship Accelerators



**WOMEN'S
ENTREPRENEURSHIP
ACCELERATOR**

EWA Empowering
Women in Agrifood



We understand how our accelerator adds value to existing landscape

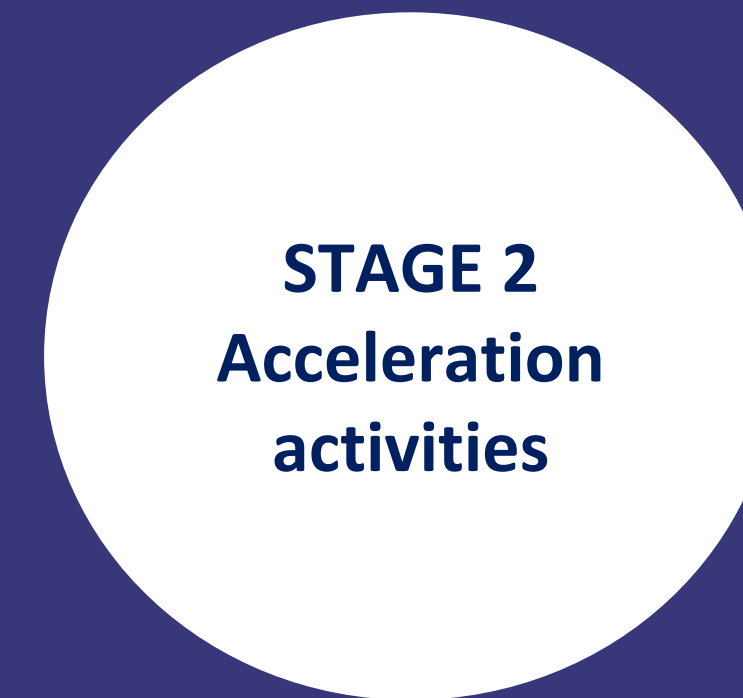
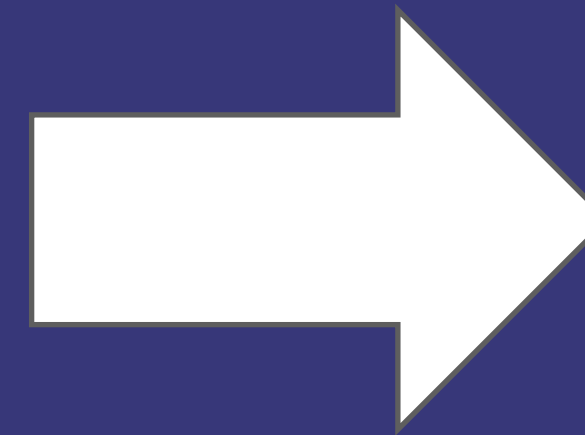


Commonwealth WEA features

- Scaling high potential female businesses and Born-digital companies through internationalisation
- Targeting opportunities to scale from both developing and developed countries
- Increasing visibility and profile, and promoting women entrepreneurs
- Experiential programme focused on business specific acceleration support Global mentoring team
- Scaling opportunities through the unique commercial advantages of the Commonwealth Programme
- Alumni commit to inspire and support next generation of entrepreneurs in their own country
- Stories of women entrepreneurs will be shared with schools and universities through a range of channels to inspire talent while challenging stereotypes



WEA Accelerator Programme Design

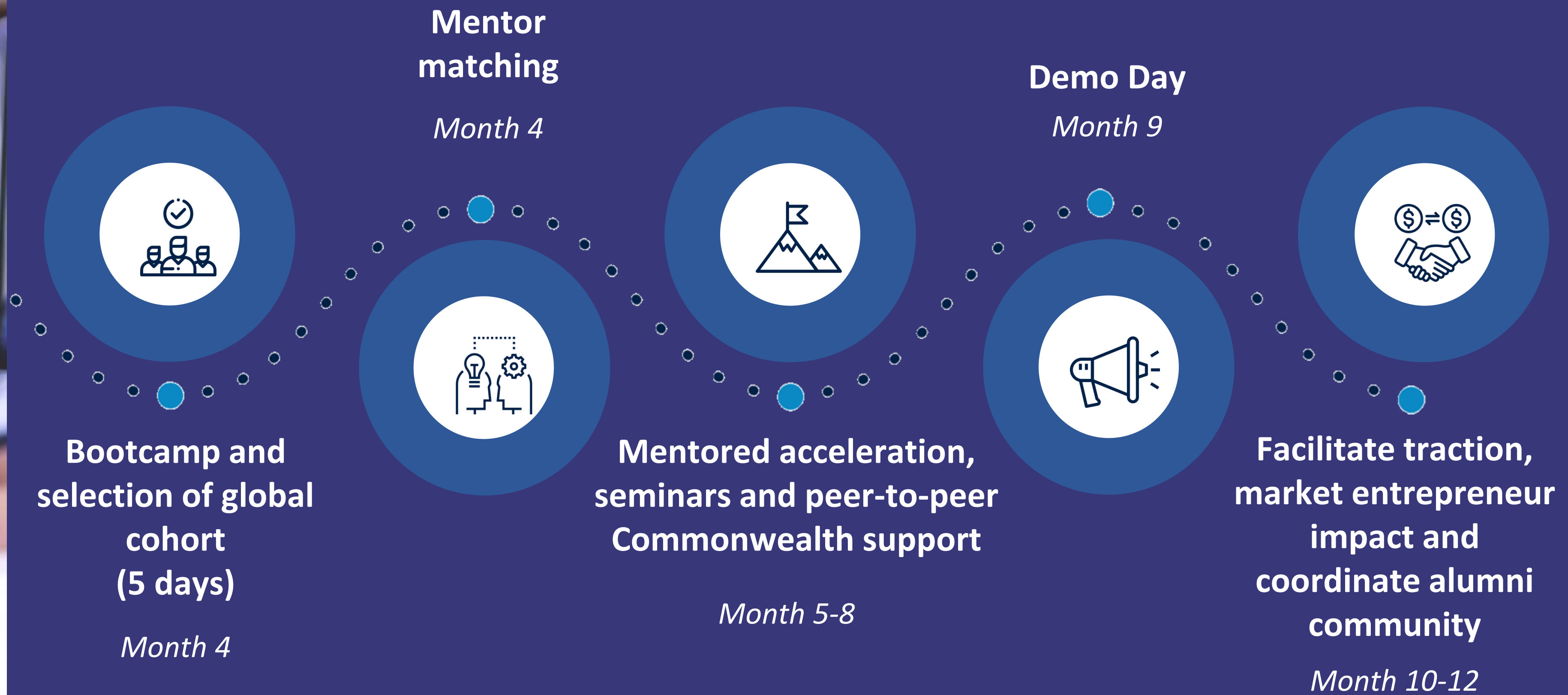


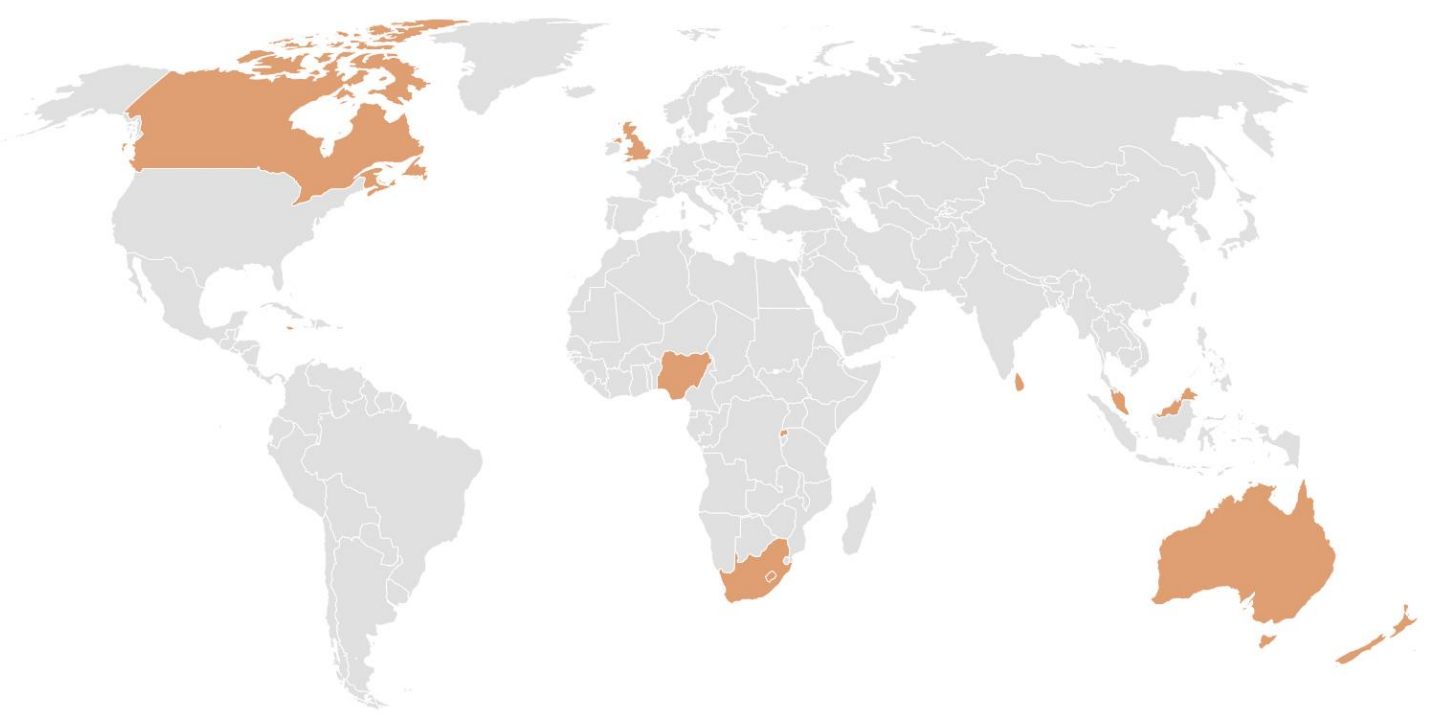
STAGE 1: National calls and selection of global cohort





STAGE 2: Acceleration





WEA Programme roll out

Phase 1:

15 Countries across all Commonwealth Regions

- **Africa:** Nigeria, South Africa, Rwanda, Mauritius*
- **Europe:** Malta*, UK
- **Asia:** Singapore, Malaysia, Sri Lanka
- **Pacific:** Australia, New Zealand, Papua New Guinea*
- **Americas and the Caribbean:** Canada, Barbados*, Jamaica*

(asterisked countries are Small States and countries underlined are members of the Commonwealth Digital Connectivity Cluster)

Produces one global cohort of 45 entrepreneurs



WEA Programme roll out

Phase 2:

Rollout across the Commonwealth

- Running separate regional accelerator programmes staggered across a 17-month period (WEA programme global cycle)
- Five regions comprise:
 - Africa, Europe, Asia, Americas and Caribbean and the Pacific
- Each global programme cycle will support 225 high impact female entrepreneurs geared (but not limited) to women in emerging tech
- Graduated entrepreneurs join an alumni community and are committed to a programme to inspire and support next generation entrepreneurs in their own country

Projected WEA Programme Impacts

10-year Impact after 5 global cycles

1,125

Global high impact
female entrepreneurs
and role models

>\$12 bn

Average increase on
Gross value added
(GVA)

1 M

Women influenced via
female global cohorts

>62,500

High value jobs
created

24%

Average member state
increase in GVA





Stakeholder benefits

- Support for a tangible, measurable and top policy concern in gender equality
- Stimulating regional economic activity and local economic development leveraging learnings and lessons from GEN's Global Startup Ecosystem Report 2021, the world's most comprehensive research on startups, with 280 innovation ecosystems and 3 million+ companies analysed
- Wider and faster SDG impact
- Increase in global competitiveness and resilience for participating countries
- Sustained local ecosystem support via alumni and global resource sharing through Commonwealth networks



CWE Accelerator Programme Partners

Lead Partner

WOMEN'S ENTREPRENEURSHIP ACCELERATOR

IN SUPPORT OF



International
Labour
Organization



International
Trade
Centre



Empowered lives.
Resilient nations.



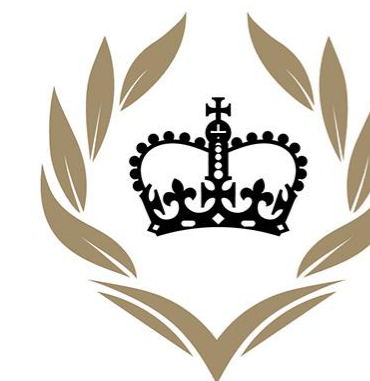
United Nations
Global Compact

Potential Commonwealth Partners



COMMONWEALTH

Enterprise and Investment Council



QUEEN'S
COMMONWEALTH
TRUST



The Association
of Commonwealth
Universities

CWE Accelerator has been developed in consultation with the Commonwealth Secretariat and the UK Government as Commonwealth Chair-in-office (including via CDC)



Next steps

- Public announcement of CWE Accelerator at the UN Women's Entrepreneurship side-event at UN General Assembly on 28 September 21
- Develop strategic footprint and workplan with UN WEA for 2021-22
- Present programme for feedback and endorsement to key public stakeholders in November including Commonwealth Secretariat, UK Government as Commonwealth Chair-in-Office and High Commissions in London
- Invite feedback and endorsement from leading female Commonwealth entrepreneurs
- Engage potential supporters and wider partners to start no later than Commonwealth Day and International Women's Day 2022



The Commonwealth

WOMEN'S
ENTREPRENEURSHIP
ACCELERATOR

Contact information



Arif Zaman

info@thecwea.org

Website: thecwea.org